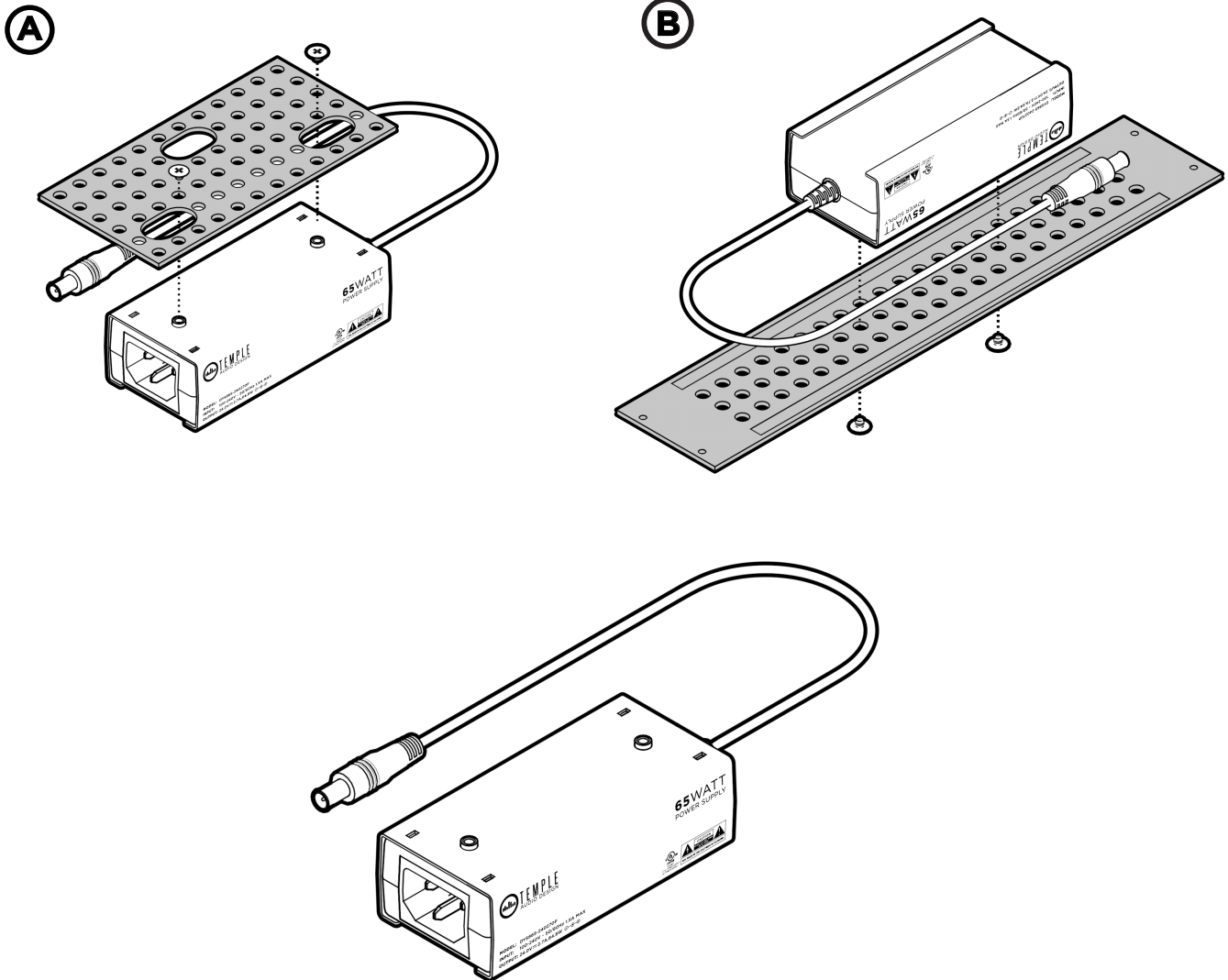


INSTALLATION



The Temple Audio 65 Watt Power Supply provides clean DC power to your devices and can be easily mounted under your Templeboard as part of Temple's modular power ecosystem.

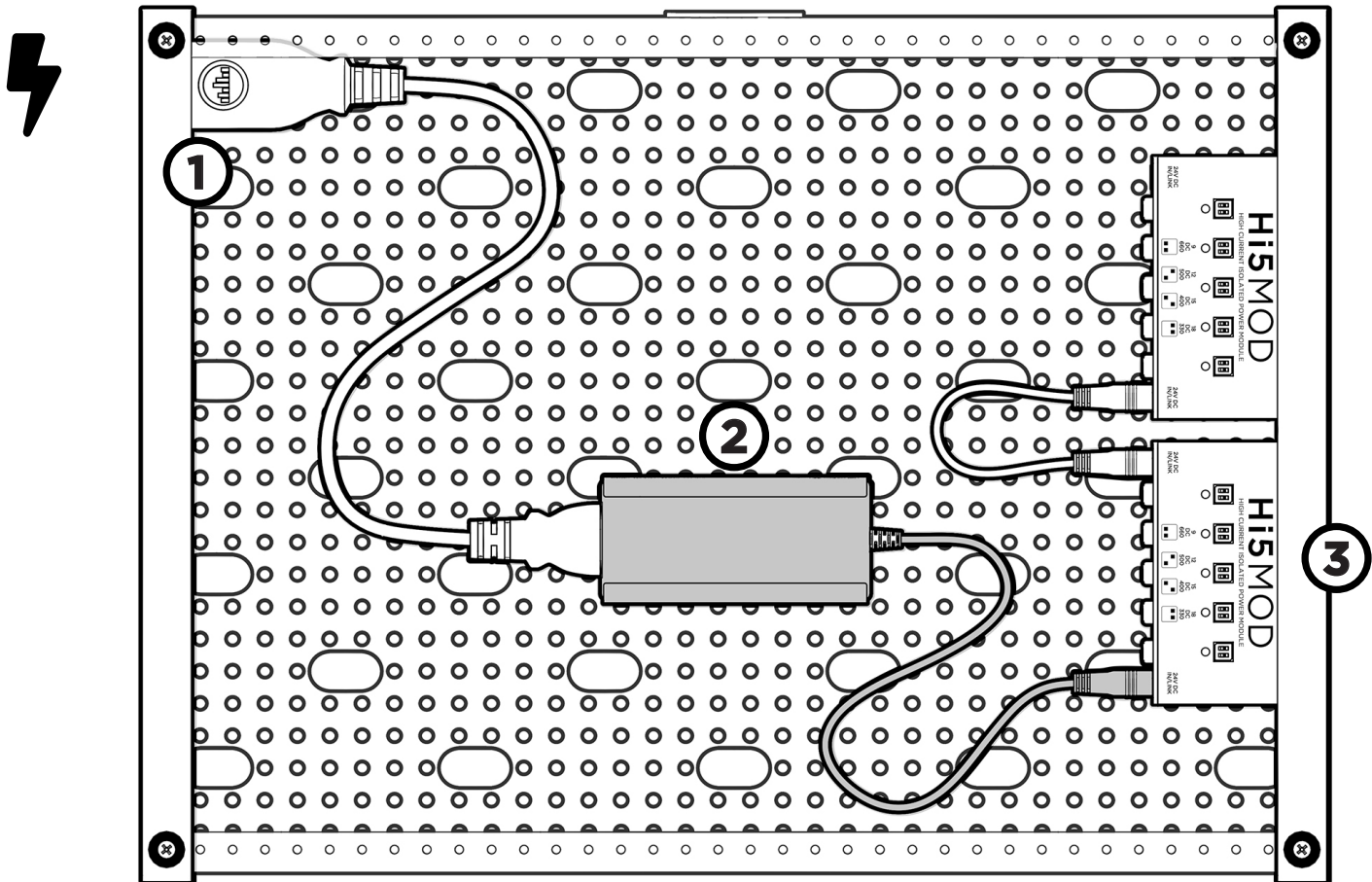
Compatible with any device that receives a 24V DC input via EIAJ-3 cable end (Cioks "Link"), the 65 Watt Power Supply has a variety of uses.

The standard use case for the 65 Watt Power Supply is to pair it with an IEC MOD and Cioks Hi5 MOD(s) (sold separately). The IEC MOD brings power through the modular end panel of your Templeboard to the PSU 65 mounted underneath. You then run the EIAJ-3 cable to the first Hi5 MOD in your chain to distribute power to five clean high-current isolated channels. Use an EIAJ Link cable to link to multiple Hi5 MODs and gain more isolated channels.

TEMPLE POWER SERIES

This system is designed to be the cleanest, most modular and unobtrusive system to power your pedals. It has three parts:

1. IEC Mod or PowerCon Mod: Brings power from the wall to the side of your pedalboard
2. 65 Watt Power Supply: Converts your 120/240V wall power to the required 24V to your Hi5(s)
3. One or more Hi5 MODs



SPECS:

65W, 24V DC 2.7A power brick
100-240V at 50/60Hz, 1.5A max

24V EIAJ-3 connector: Compatible with Temple Audio Hi5 MOD and 3rd party brands utilizing the same system (eg. Strymon, Walrus)

Mounts directly to perf or mounting bracket via included screws.